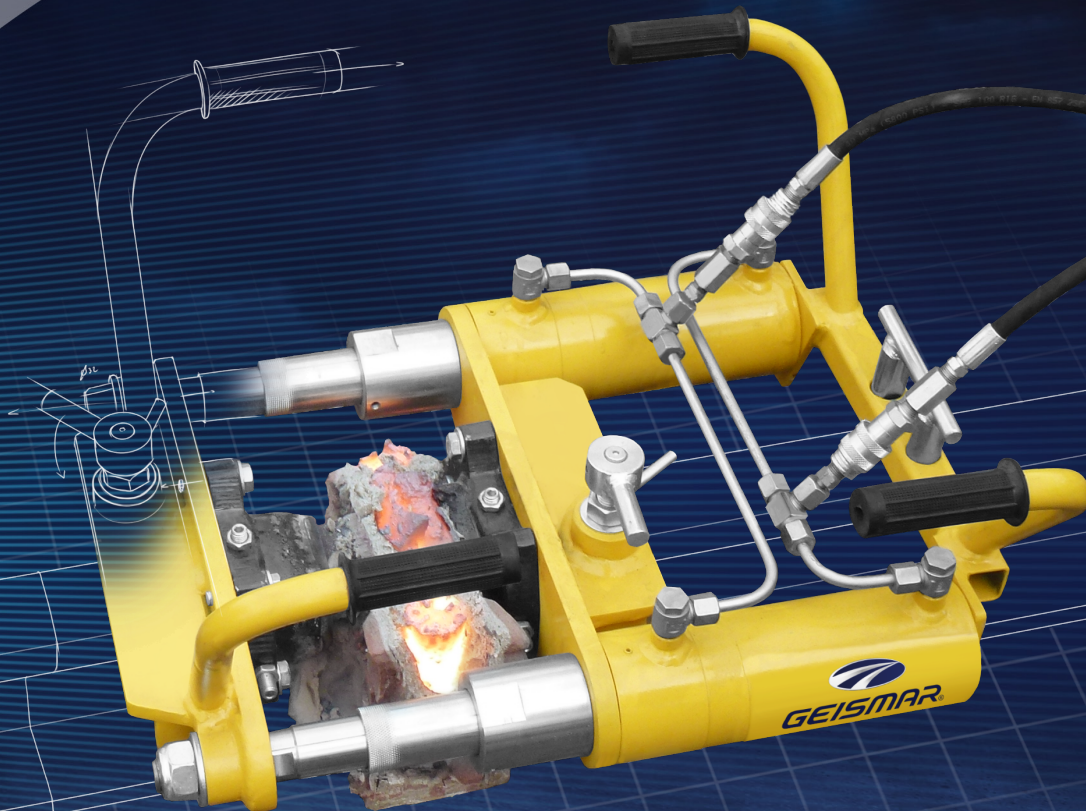


# **SHEAR HORNET**

**ESN3** RAIL WELD SHEAR

*Precision and modularity*



*Clean rail welds shearing*

*Powerful and well distributed cutting effort*

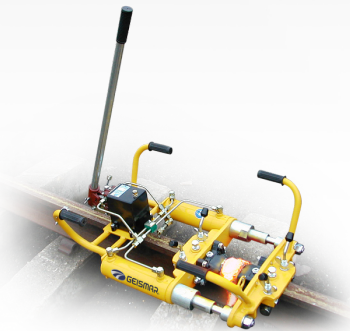
*Compact and lightweight*

**HORNET**  
PORTABLE TECHNOLOGIES

**GEISMAR**

## Your benefits

- Clean shearing of rail welds due to the power of the machine and the ideal distribution of cutting force on the rail
- Precise shearing with precisely adjustable knives and guides
- Compact, lightweight and modular machine that can be hydraulically powered by a power pack or a hand pump



*Shearing machine with integrated hand pump*



*Shearing machine with separate hand pump*



*Shearing machine and hydraulic unit with separate motor*

## Specifications

Engine	Integrated/separate hand pump or thermal/electric unit
Cutting force	220 kN
Hydraulic operating pressure	325 bar (4,713 psi)
Stroke of knives	155 mm / 185 mm / 240 mm (6 in. / 7.3 in. / 9.5 in.)
Rail type	Vignole
Mass	≈ 60 kg (132 lbs), head only
Dimensions folded handles (L x W x H)	≈ 551 x 535 x 340 mm (21.7 x 21 x 13.4 in.)

## Options and accessories

- Integrated hand pump (HI version)
- Separate hand pump (HS version)
- Hydraulic unit with separate motor (MS version)
- Electric motor (ACTIVION version)

## Consumables

- Knives for all types of Vignole rails
  - Standard knives
  - Knives for worn rails
  - Omega-shaped knives
- Knives for grooved rails



*Knife shapes*